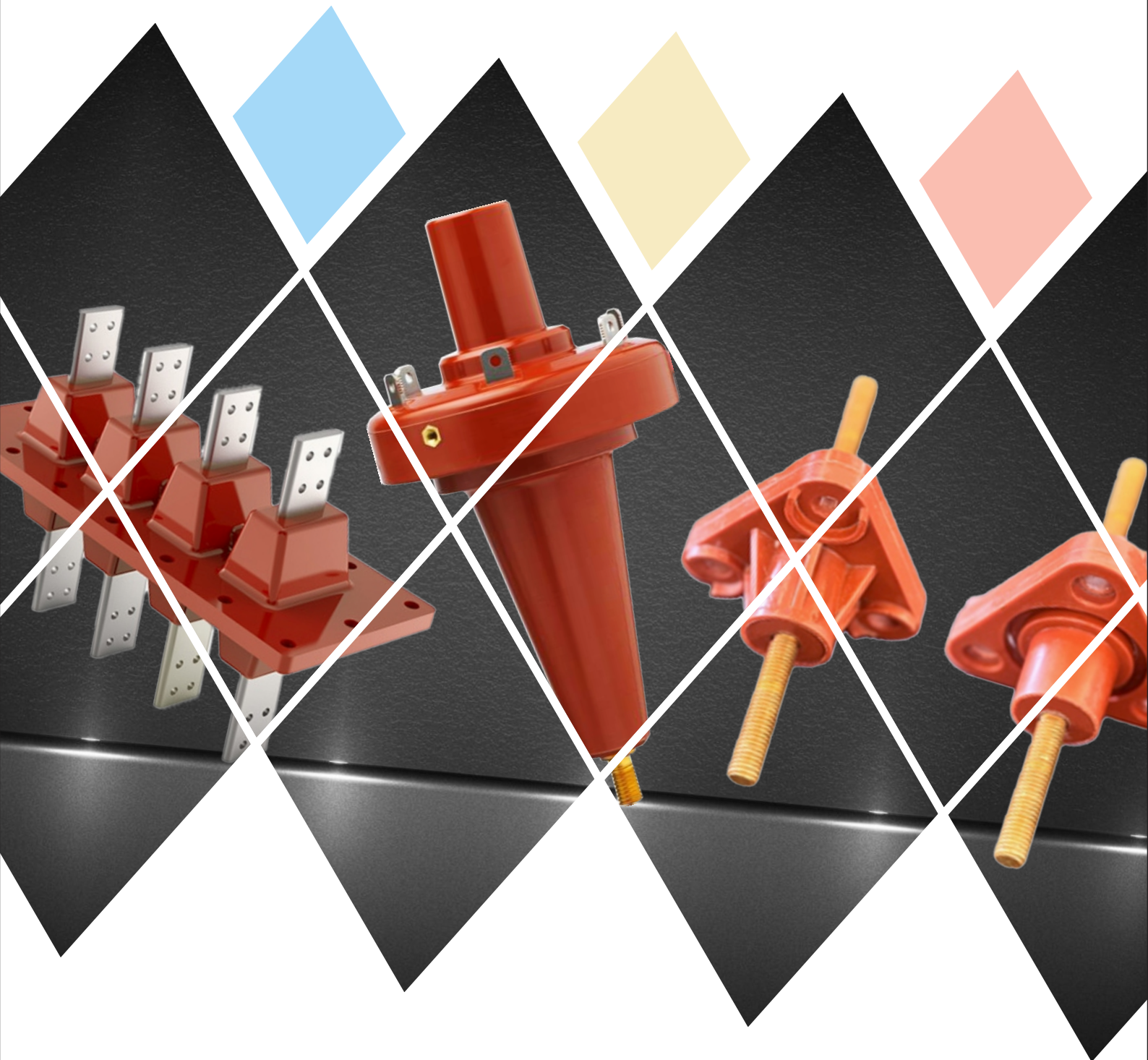
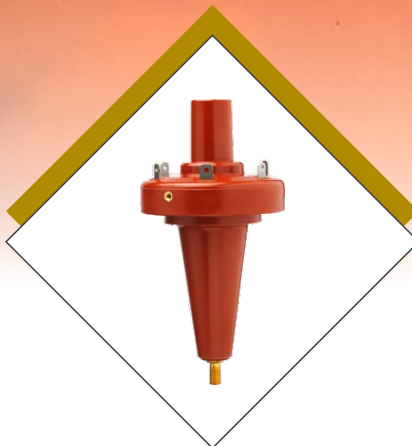
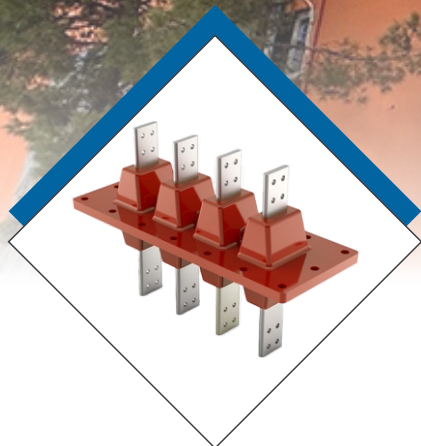




LITA ENERGY



www.lita-energy.com



LITA ENERGY

Leading the Way in Epoxy Resin Insulation Since 2014

At Lita Energy, along with our group company Mareks, we have established ourselves as Turkey's foremost manufacturer of epoxy resin insulation. Our expertise and commitment to quality have positioned us as a pivotal player in the global market.

Our Product Range

We specialize in producing high-quality plug-in bushing, monoblocks and rod bushing for use in equipment insulated oil fluid, typically for transformers and switchgear. Our products adhere to stringent standards, including TSE, EN 50180, EN 50181, BS 2562 and IEC 60137, ensuring reliability and performance.

Unmatched Quality

All insert and conductive parts of our bushings and monoblocks are crafted from the finest materials available in Turkey, guaranteeing superior durability and efficiency.

Our Mission

Lita Energy is dedicated to enhancing its industry standing through continuous improvement and unwavering reliability. We offer a comprehensive range of industrial products and high and low voltage solutions, meticulously tailored to customer requirements and expectations. Our commitment to excellence ensures shortest delivery times and prompt, effective actions.

Why Choose Us?

Proven Expertise: With over a decade of experience, our team of experts deliver high quality of products.

Tailored Solutions: We understand that every business is unique. Our customized strategies ensure that your specific needs are met.

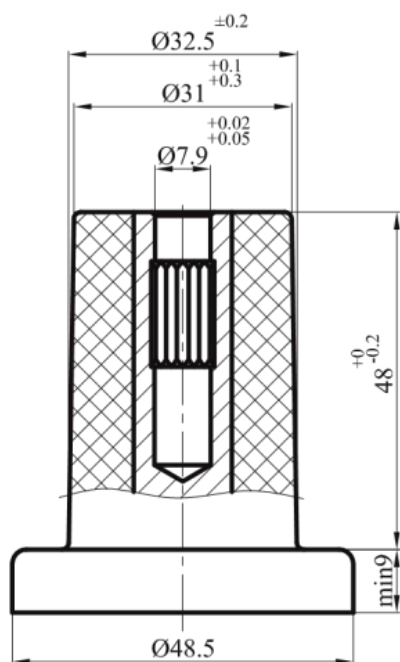
Innovative Technology: We leverage the latest technology to provide you with the most efficient and effective solutions.

Customer-Centric Approach: Your success is our priority. We work closely with you to ensure your goals are achieved.

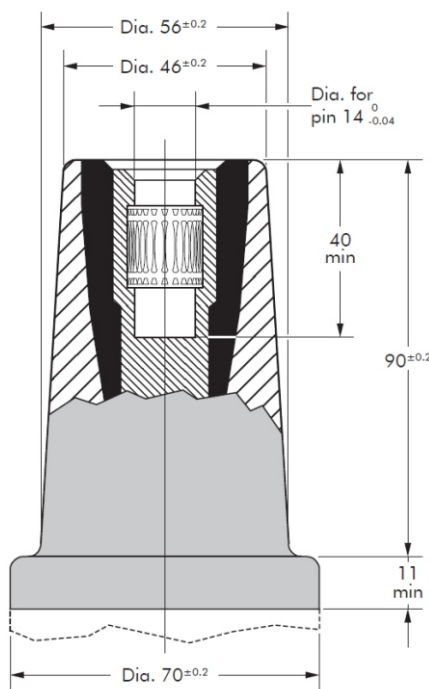
Partner with Us

Join the ranks of satisfied customers who trust Lita Energy for their epoxy resin insulation needs. Discover the impact that quality and expertise can have on your operations.

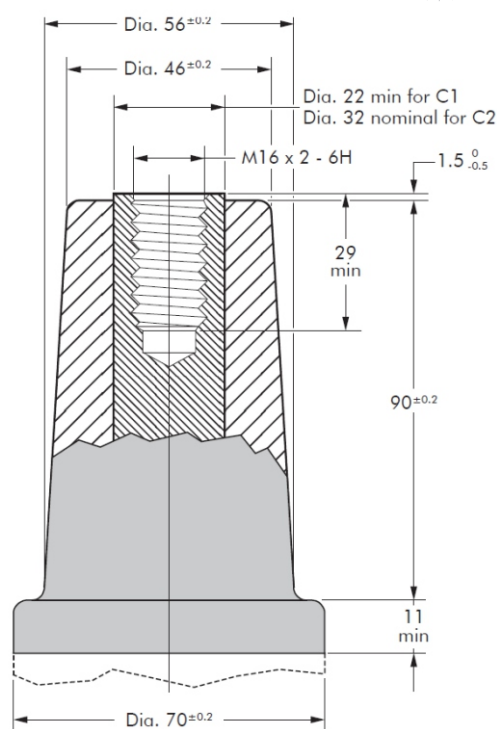
Dimensons of Plug-In Bushing



Interface A1



Interface B1 & B2

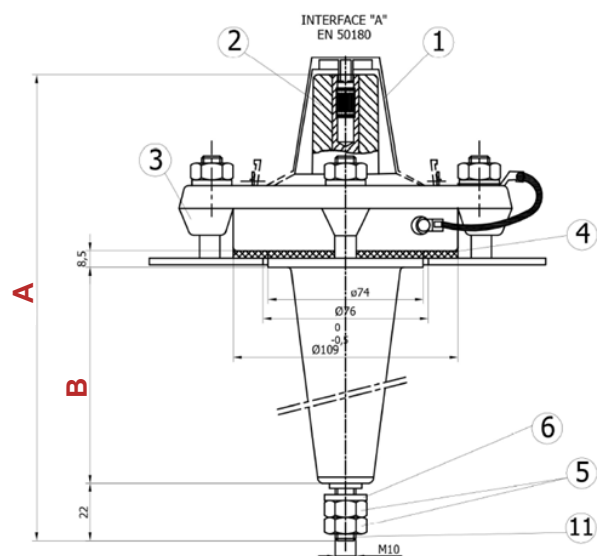


Interface C1 & C2

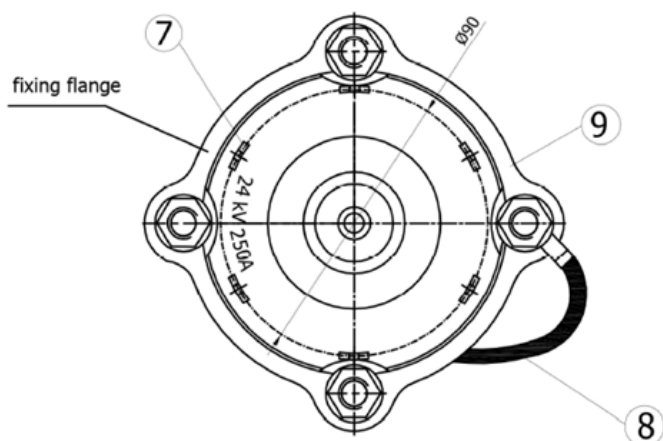
Short Circuit Ratings

Interface Type	Contact Type	Current Rating (A)	RMS symm (kA)			Peak symm (kA)
			1 sec.	2 sec.	3 sec.	
A1	Plug in socket	250	12,5	9.0	7,5	31
B1	Plug in socket	250	12,5	9.0	7,5	31
B2	Plug in socket	400	16	11,3	9,2	40
C1	Bolted	630	28.0	19,7	16,1	70
C2	Bolted	1250	75.0	53.0	43.3	>150

Plug-In Bushing Up to 24 Kv – 250A



#	NAME	QTY	MATERIAL
1	PROTECTIVE COVER	1	PA6
2	CONNECTION INTERFACE	A	
3	ALU-CLAMPING E DIN 42538	4	ALUMINIUM
4	GASKET	1	NBR
5	CONNECTION NUT	2	BRASS Ms58
6	M10 WASHER	1	BRASS Ms58
7	FIXING SHOE	6	STAINLESS STEEL
8	EARTH JUMPER	1	NYT
9	FIXING FLANGE A DIN 42538	1	STEEL ZINC PLATE
10	MAIN BODY	1	EPOXY RESIN
11	CONNECTION BOLT	1	E.Cu F25



Product Code	Voltage Ur (kV)	Current Ir (A)	Dimensions (mm)		Interface
			A	B	
LE-PB 24/250-284	12-24	250	284	165,5	Interface A
LE-PB 24/250-224	12-24	250	224	106,5	Interface A
LE-PB 24/250-189	12-24	250	189	72	Interface A
LE-PB 24/250-171	12-24	250	171	55	Interface A



STANDARDS

The plug-in type bushings in accordance with IEC TS EN 50180, IEC TS EN 50181 and IEC 60137.

DESIGN

The equipment bushings are moulded epoxy insulated parts in accordance with IEC EN 50180, The standard bushings are equipped with 6 tabs for the bail restraint.

TESTING

Each bushing is tested for AC withstand, Partial Discharge and Air Leakage test prior to leaving the factor

INSTALLATION

Suggested Bolt Torque

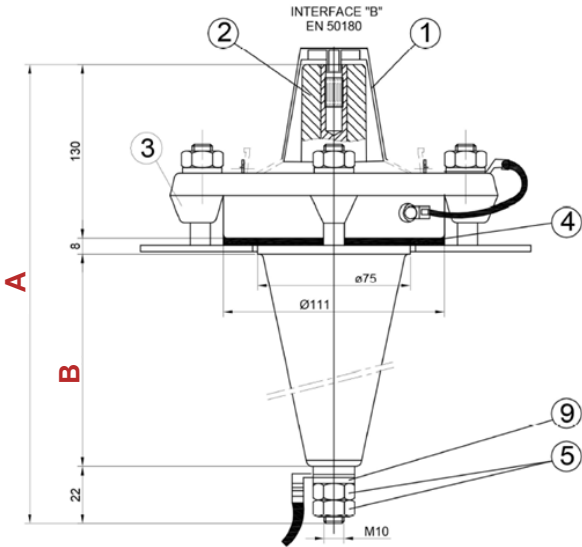
M10: 3-5 Nm

M16: 8-10 Nm

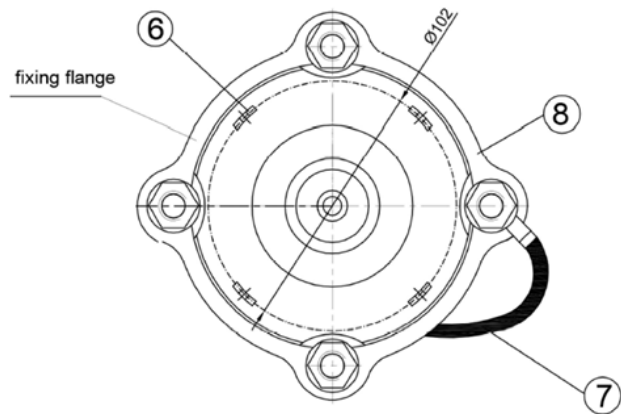
Earth Cable: 3-5 Nm

Alu Clamping: 10-15 Nm

Plug-In Bushing Up to 36 Kv – 250A



#	NAME	QTY	MATERIAL
1	PROTECTIVE COVER	1	PA6
2	CONNECTION INTERFACE	B	
3	ALU-CLAMPING E	4	ALUMINIUM
4	GASKET	1	NBR
5	CONNECTION NUT	2	BRASS Ms58
6	FIXING SHOE	4	STAINLESS STEEL
7	EARTH JUMPER	1	NYN
8	FIXING FLANGE A	1	STEEL ZINC PLATE
9	M10 WASHER	1	BRASS Ms58
10	CONNECTION BOLT	1	E.Cu F25
11	MAIN BODY	1	EPOXY RESIN



Product Code	Voltage Ur (kV)	Current Ir (A)	Dimensions (mm)		Interface
			A	B	
LE-PB 36/250-240	36	250	240	80	Interface B
LE-PB 36/400-240	36	400	240	76	Interface B
LE-PB 36/400-310	36	400	310	146	Interface B
LE-PB 36/630-333	36	630	333	146	Interface C



STANDARDS

The plug-in type bushings in accordance with IEC TS EN 50180, IEC TS EN 50181 and IEC 60137.

DESIGN

The bushings are moulded epoxy insulated parts in accordance with IEC EN 50180,

The standard bushings are equipped with 6 tabs for the bail restraint.

TESTING

Each bushing is tested for AC withstand, Parital Discharge and Air Leakage test prior to leaving the factor

INSTALLATION

Suggested Bolt Torque

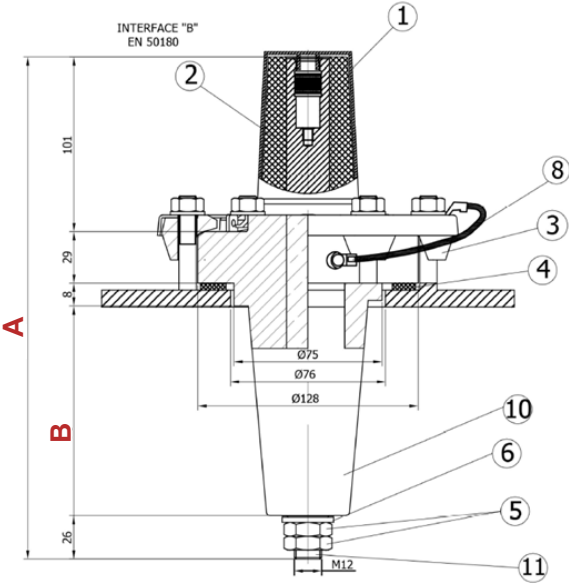
M10: 3-5 Nm

M16: 8-10 Nm

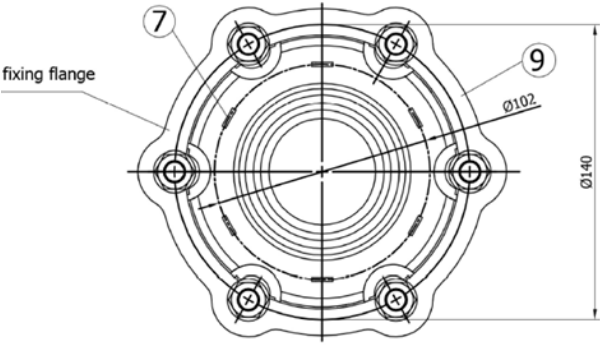
Earth Cable: 3-5 Nm

Alu Clamping: 10-15 Nm

Plug-In Bushing Up to 36 Kv – 400A



#	NAME	QTY	MATERIAL
1	PROTECTIVE COVER	1	PA6
2	CONNECTION INTERFACE	B	
3	ALU-CLAMPING E DIN 42538	6	ALUMINIUM
4	GASKET	1	NBR
5	CONNECTION NUT	2	BRASS Ms58
6	M12 WASHER	1	BRASS Ms58
7	FIXING SHOE	6	STAINLESS STEEL
8	EARTH JUMPER	1	NYN
9	FIXING FLANGE A DIN 42538	1	STEEL ZINC PLATE
10	MAIN BODY	1	EPOXY RESIN
11	CONNECTION BOLT	1	E.Cu F25



Product Code	Voltage Ur (kV)	Current Ir (A)	Dimensions (mm)		Interface
			A	B	
LE-PB 36/400-240	36	400	240	76	Interface B
LE-PB 36/400-310	36	400	310	146	Interface B



STANDARDS

The plug-in type bushings in accordance with IEC TS EN 50180, IEC TS EN 50181 and IEC 60137.

DESIGN

The bushings are moulded epoxy insulated parts in accordance with IEC EN 50180, The standard bushings are equipped with 6 tabs for the bail restraint.

TESTING

Each bushing is tested for AC withstand, Parital Discharge and Air Leakage test prior to leaving the factor

INSTALLATION

Suggested Bolt Torque

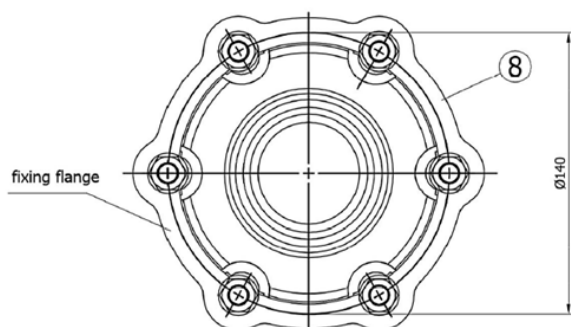
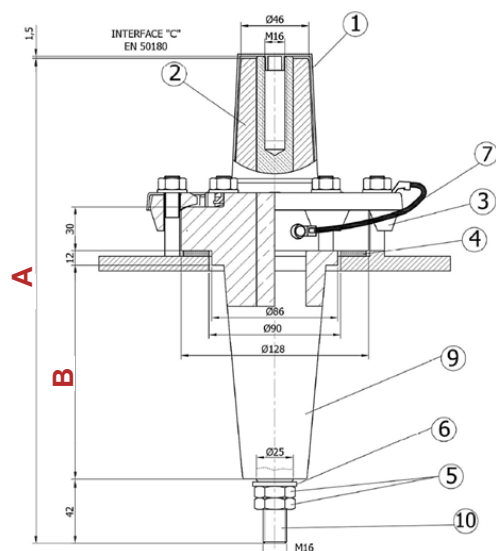
M10: 3-5 Nm

M16: 8-10 Nm

Earth Cable: 3-5 Nm

Alu Clamping: 10-15 Nm

Plug-In Bushing Up to 36 Kv – 630A



#	NAME	QTY	MATERIAL
1	PROTECTIVE COVER	1	PA6
2	CONNECTION INTERFACE	C	
3	ALU-CLAMPING E DIN 42538	6	ALUMINIUM
4	GASKET	1	NBR
5	HALF NUT M16	2	BRASS Ms58
6	M16 WASHER	1	BRASS Ms58
7	EARTH JUMPER	1	NYN
8	FIXING FLANGE A DIN 42538	1	STEEL ZINC PLATE
9	MAIN BODY	1	EPOXY RESIN
10	CONNECTION BOLT	1	E.Cu F25

Product Code	Voltage Ur (kV)	Current Ir (A)	Dimensions (mm)		Interface
			A	B	
LE-PB 36/630-333	36	630	333	146	Interface C

STANDARTS

The plug-in type bushings in accordance with IEC TS EN 50180, IEC TS EN 50181 and IEC 60137.

DESIGN

The bushings are moulded epoxy insulated parts in accordance with IEC EN 50180.

The standard bushings are equipped with 6 tabs for the bail restraint.

TESTING

Each bushing is tested for AC withstand, Partial Discharge and Air Leakage test prior to leaving the factor

INSTALLATION

Suggested Bolt Torque

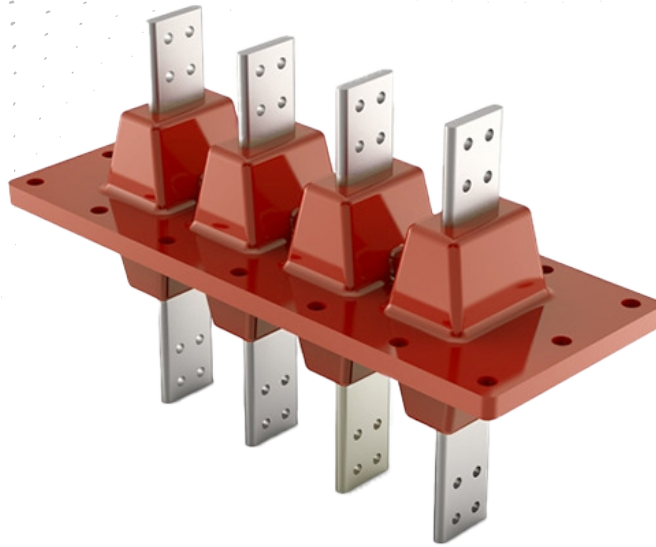
M10: 3-5 Nm

M16: 8-10 Nm

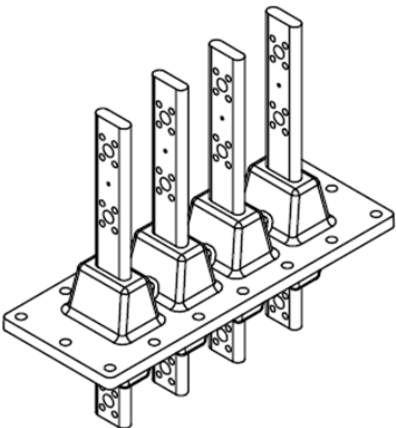
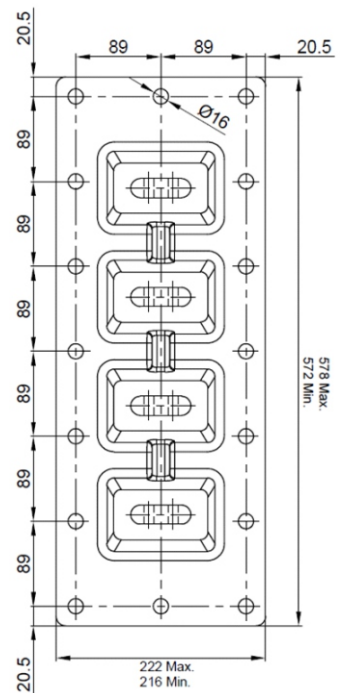
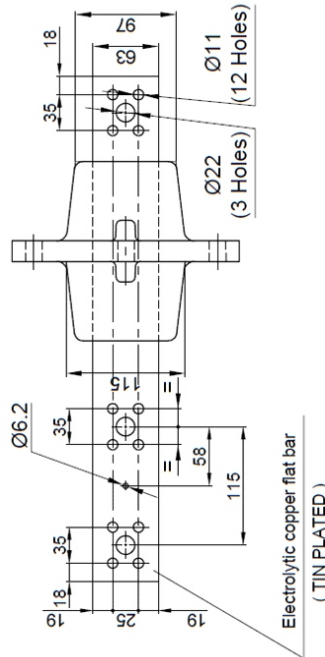
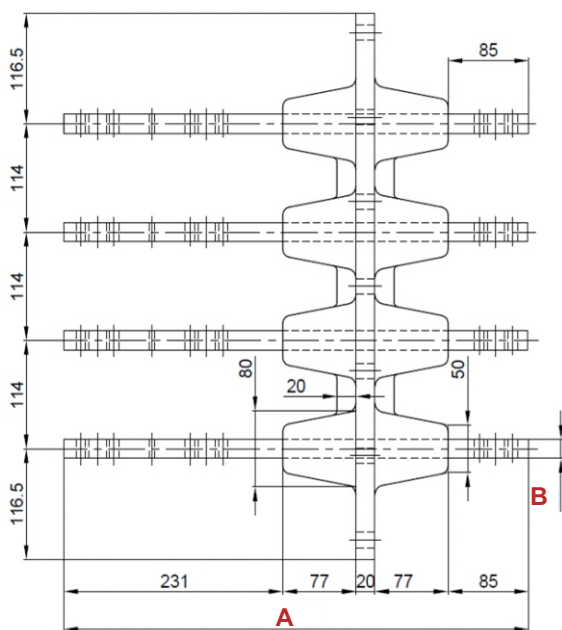
Earth Cable: 3-5 Nm

Alu Clamping: 10-15 Nm

LV MONOBLOCK

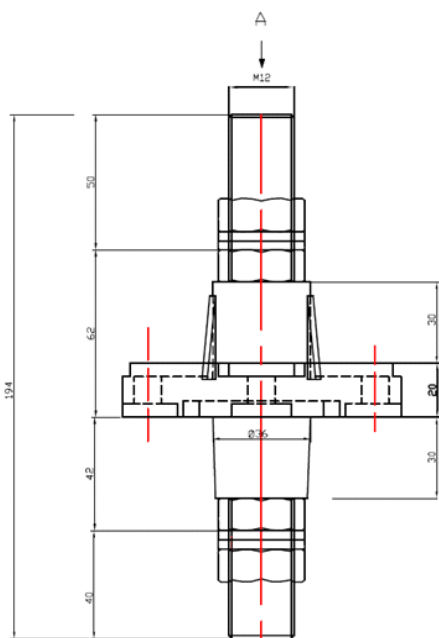


**Epoxy resin monoblock 800A to 4000A oil/air for indoor and outdoor applications,
according to BS 2562,EN50336.**

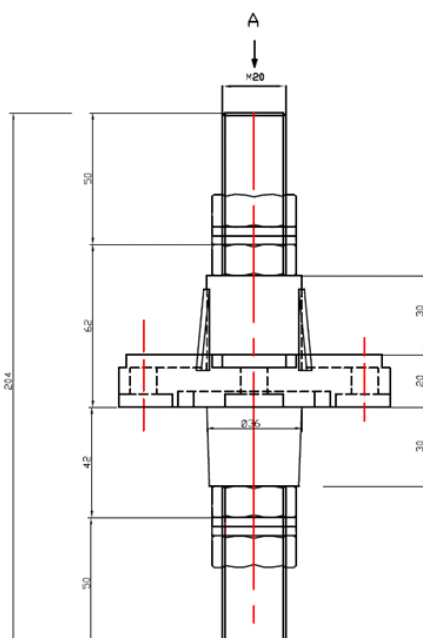


Product Code	Voltage Ur (kV)	Current Ir (A)	Dimensions (mm)	
			A	B
LE-MB / 800-375-12,5	1,1	800	375	12,5
LE-MB / 1700-375-12,5	1,1	1700	375	12,5
LE-MB / 1775-490-12,5	1,1	1775	490	12,5
LE-MB / 2100-490-20	1,1	2100	490	20
LE-MB / 2500-375-20	1,1	2500	375	20
LE-MB / 2750-490-20	1,1	2750	490	20
LE-MB / 2750-605-20	1,1	2750	605	20
LE-MB / 4000-375-35	1,1	4000	375	35

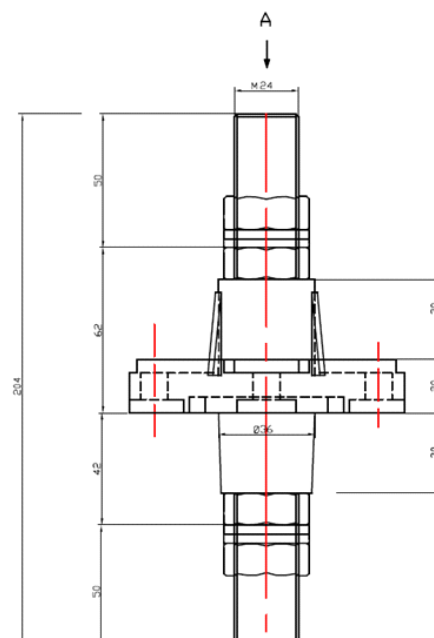
ROD BUSHING



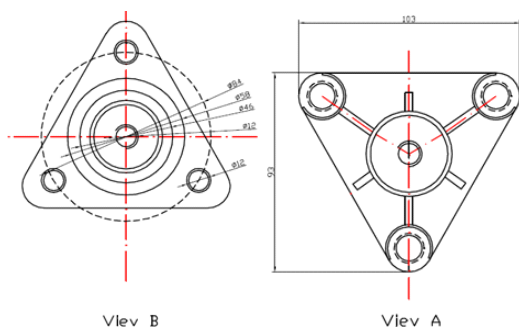
LE-RB 1/250-194



LE-RB 1/500-204



LE-RB 1/750-204



Product Code	Voltage Ur (kV)	Current Ir (A)	Dimensions (mm)	
			Length	Dia
LE-RB 1/250-194	1	250	194	12
LE-RB 1/500-204	1	500	204	20
LE-RB 1/750-204	1	750	204	24



LITA ENERGY



info@lita-energy.com
www.lita-energy.com

Factory Address: Mardin OSB Yukarıazıklı OSB Mahallesi 51. Sk. No:7 Kızıltepe/Mardin/Türkiye